



1

1.1

1.2

1.3

1.4

2

2.1

2.1.1

“ ” “ ”

“ ”

10.68

2003 10 15

“ ”

2011

1 26

71.606%

2011 5 5

2011 9 16

28.394%

“ ” 2011 10 27

2012 2 27

2012 11 5

2.1.2

2.1.2.1

Lujiazui International Trust Corporation Limited

Lujiazui Trust

2.1.2.2

2.1.2.3

29

1 818

266061

<http://www.ljzitic.com.cn>

[ljzxt@ljzitic.com.cn](mailto:ljzxt@ljzitic.com.cn)

2.1.2.4

021-50587808

021-50588225

[ljzxt@ljzitic.com.cn](mailto:ljzxt@ljzitic.com.cn)

2.1.2.5

26

14

1600 30 /25

2.1.2.6

550

12

2.1.2.7

33

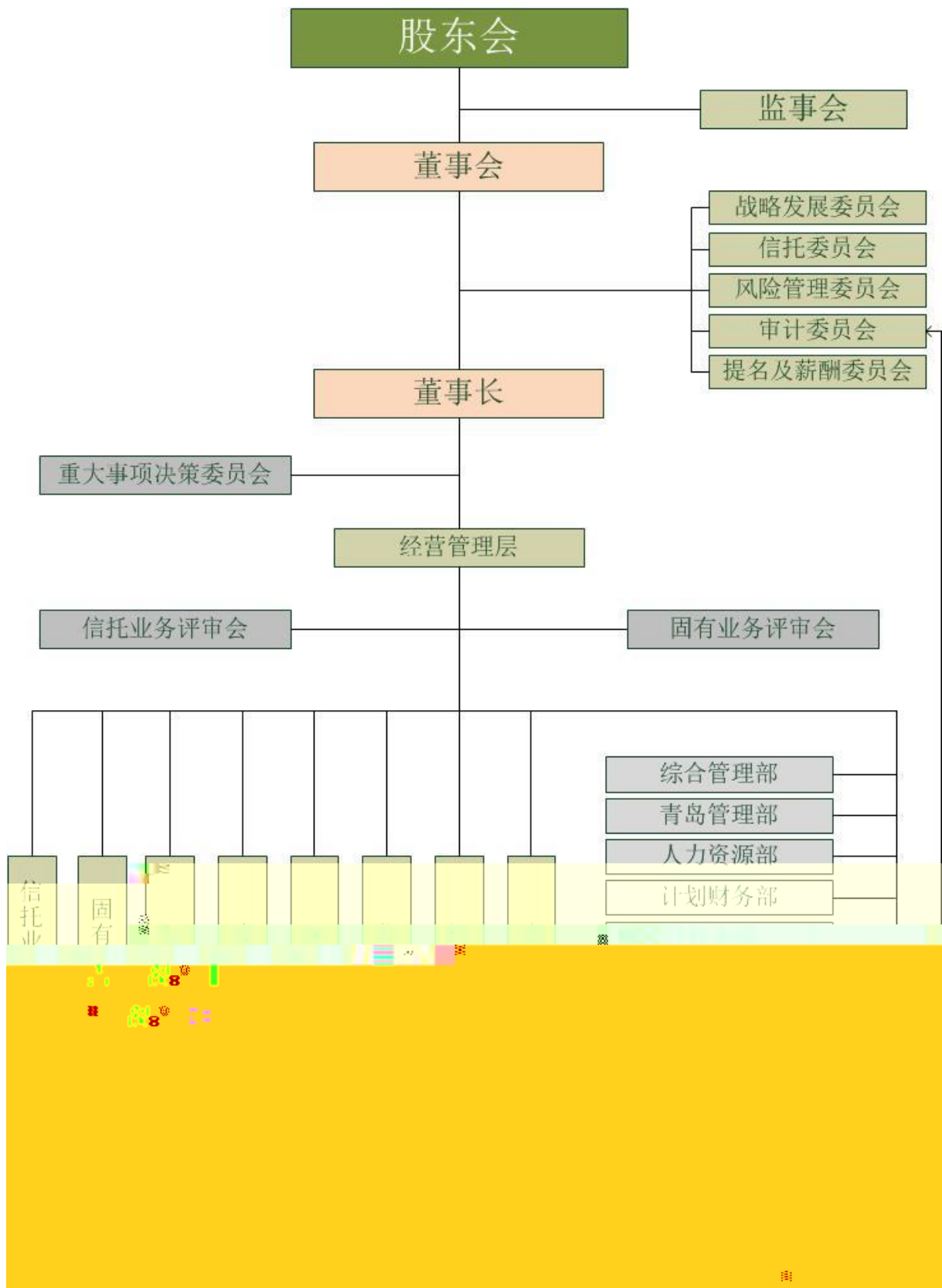
14

3

12

2.2

2.2



3

3.1

2

4

	%				
--	---	--	--	--	--

71.606

474,500

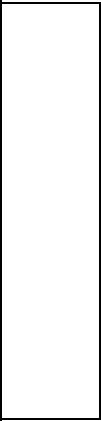
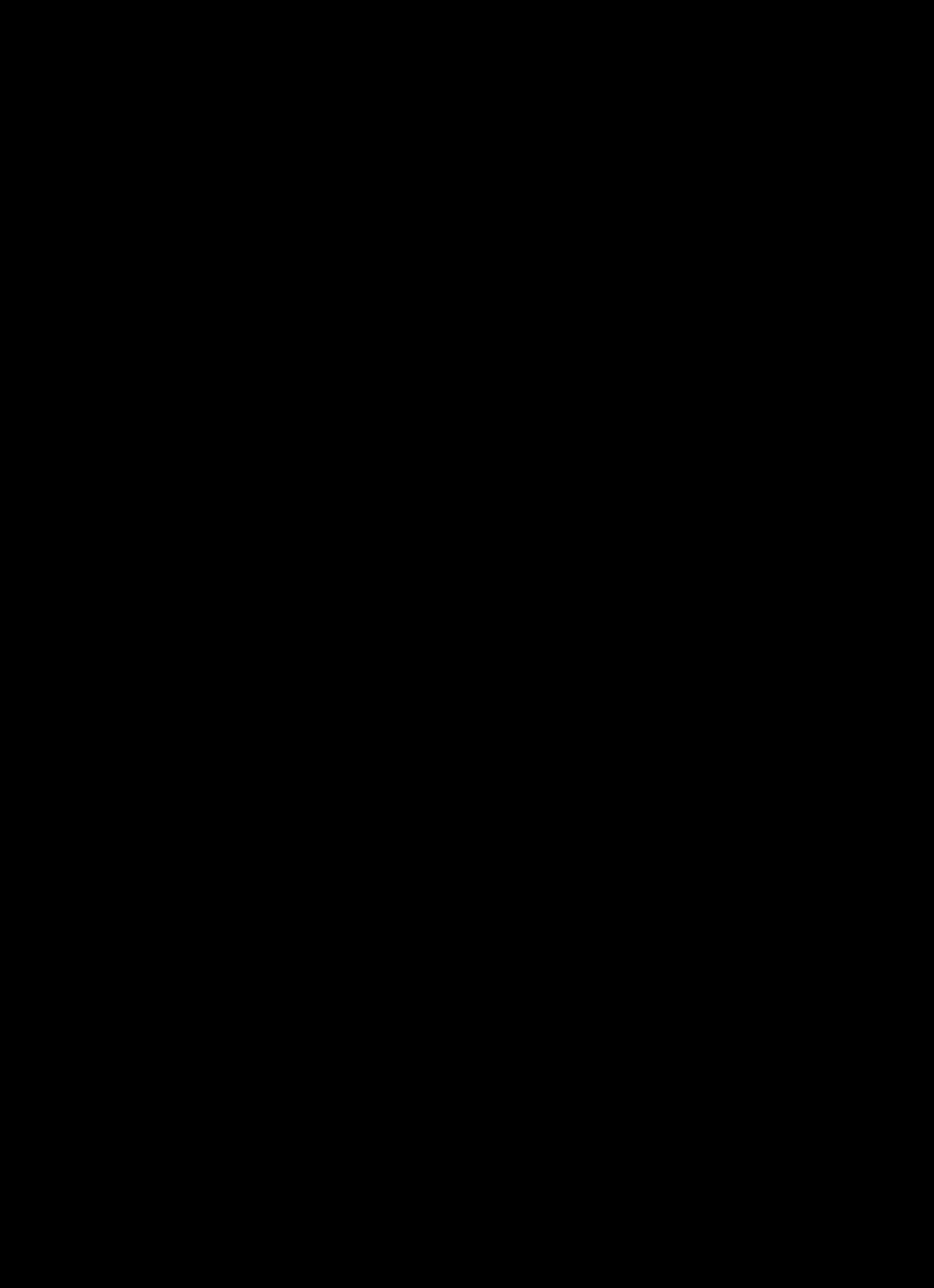
1600

2506

			61	2011 10		71.606	
			51	2011 11	( )	28.394	( )

3.2-2

						(%)	
			47	2011 12	-	-	



3.4

3.4

			43	2013	12	20	
			61	2011	11		



### 4.1.3

"

"

## 4.2

### 4.2.1

#### 4.2.1


## 4.2.2

### 4.2.2


## 4.3

### 4.3.1

" "

" "

### 4.3.2

" "

" "

" "

" "

## **4.4**

### **4.4.1**

### **4.4.2**

#### **4.4.2.1**

**4.4.2.2**

**4.4.2.3**

**4.4.2.4**

**4.4.2.5**

**4.4.2.6**

**4.5.1.1**

**4.5.1.2**

**4.5.1.3**

**4.5.1.4**

**4.5.2**

**4.5.2.1**

**4.5.2.2**

**4.5.2.3**

**4.5.2.4**

**5**

**5.1**

**5.1.1**



<此页无正文>

众华会计师事务所(特殊普通合伙)

中国注册会计师



9. 5. 1  
陈敏



5.1.2

		3,051.94	4,500.94				
		271,963,393.49	161,770,615.90				
		345,841,806.43	309,356,640.57				
		390,112,090.30	110,204,986.00			48,949,578.83	117,545,091.66
						34,238,881.75	45,883,509.66
		3,473,519.43	10,194,720.53				
		5,307,187.01	5,625,149.00			5,873,987.79	7,375,046.79

5.1.3

--	--	--	--	--	--	--	--	--	--

278,630,748.89

5.1.4

2013

		(								(									
		)								)									
	1	1,068,346,200.00	-120,081.43		7,811,671.30	3,905,835.65	13,167,682.05	53,231,523.99		1,146,342,831.56	315,000,000.00						-43,561,216.63		271,438,783.37

2

## 5.2

### 5.2.1


5.2.2


**6**

**6.1**

—

**6.2**

**6.3**

**6.4**

**6.4.1**

**6.4.1.1**

6.4.1.1

	110,347	12,019	0	0	3	122,369	3	0
	148,365	0	0	0	3	148,368	3	0

= + +

**6.4.1.2**

6.4.1.2


6.4.1.3


**6.4.1.4**

**6.4.1.5**

**6.4.1.6**

**6.4.1.7**

6.4.1.7




## 6.4.2

### 6.4.2.1

#### 6.4.2.1


#### 6.4.2.1.1

##### 6.4.2.1.1


#### 6.4.2.1.2

##### 6.4.2.1.2


### 6.4.2.2

#### 6.4.2.2.1

##### 6.4.2.2.1

--	--	--	--


×

×

,

×


**6.4.2.4**

" • "

**6.4.2.5**

**6.5**

**6.5.1**

6.5.1


" "

**6.5.2**

6.5.2


--	--	--	--	--	--

**6.5.3**

**6.5.3.1**

**6.5.3.2**

6.5.3.2


**6.5.3.3**

**6.5.3.3.1**

6.5.3.3.1


**6.5.3.3.2**

6.6.3.3.2


--	--	--	--

**6.5.4**

**6.6**

—

**7**

= /12

**7.3**

	121,576.14	
	86,212.44	
	141.02	
	89.46	

**7.4**

AB

8.7

8.8

9

2014 4 24